

# How to Install FINESTRA or FHC v2025.1.42 (or higher)

May 2025

## Before You Begin

---

- This upgrade may take up to 30 minutes to install. This upgrade must be completed outside of store hours, as exclusive access is required
- This upgrade must be run on your Server, Host Till or Host Workstation
- You must exit out of Finestra on all Cash Registers and Workstations before you begin the upgrade. You must stay logged out until the update completes

## Upgrade Procedures

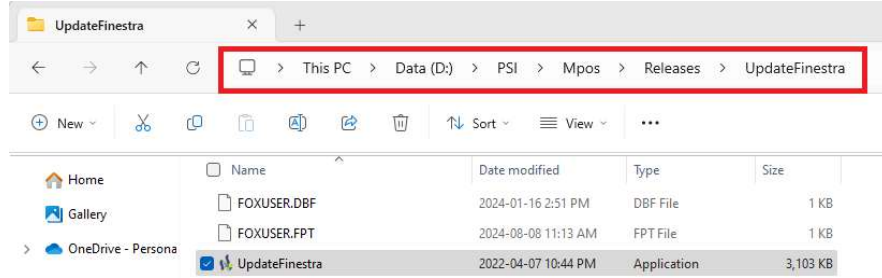
---

### **Step 1 - Exit Finestra (or FHC)**

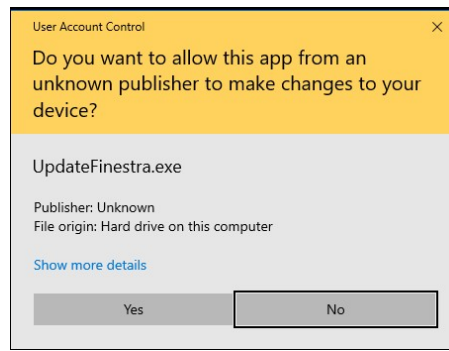
- Before you begin, exit Finestra or FHC on all Cash Registers and Workstations

### **Step 2 - Update Finestra**

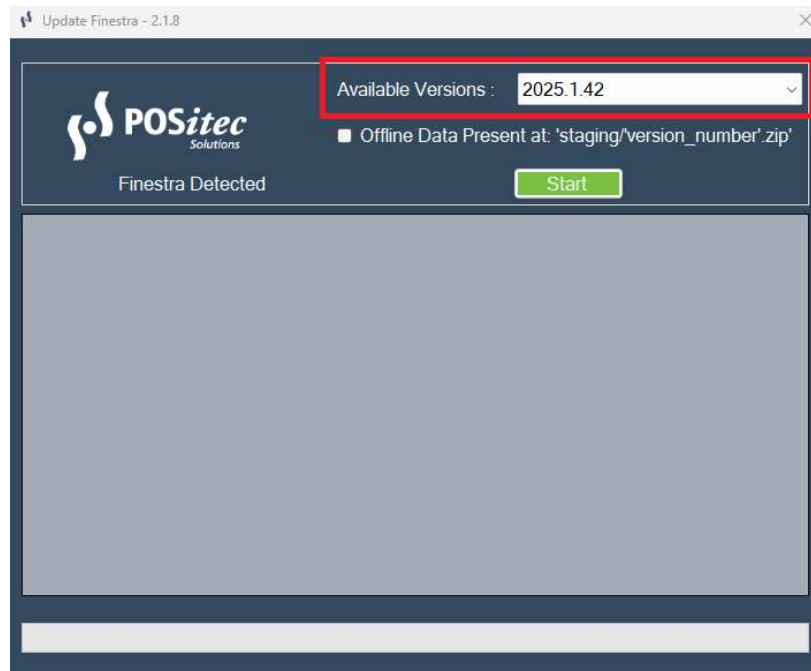
1. On your Host Computer, **[Double-click]** the This PC or Computer icon  
or  
**[Left-click]** the Folder icon in the Task Bar
2. Browse to D:\PSI\Mpos\Releases\UpdateFinestra  
or  
Browse to R:\Mpos\Releases\UpdateFinestra



3. **[Double-click]** the UpdateFinestra program, then at the “User Account Control” prompt, select **[Yes]**



4. Select version 2025.1.42 or FHC\_2025.1.42 (or higher) from the Available Versions drop down list:



5. The Release Version will confirm when it's complete.

## Troubleshooting

---

If the system is unable to complete the upgrade for any reason, it will automatically roll itself back and you will see a prompt to contact POSitec Customer Support.

- You are still able to operate your system completely!
- Email [Support@POSitec.com](mailto:Support@POSitec.com) or call **1.800.667.4605** on the next business day

POSitec Customer Support will determine the cause of the issue and correct it so you can proceed with the upgrade.

Release notes for **FINESTRA/FHC v.2025.1.42** can be found at:

[www.positec.com/POSitec Portal/Release Versions](http://www.positec.com/POSitec Portal/Release Versions)